

KULI drive – Transient Analysis

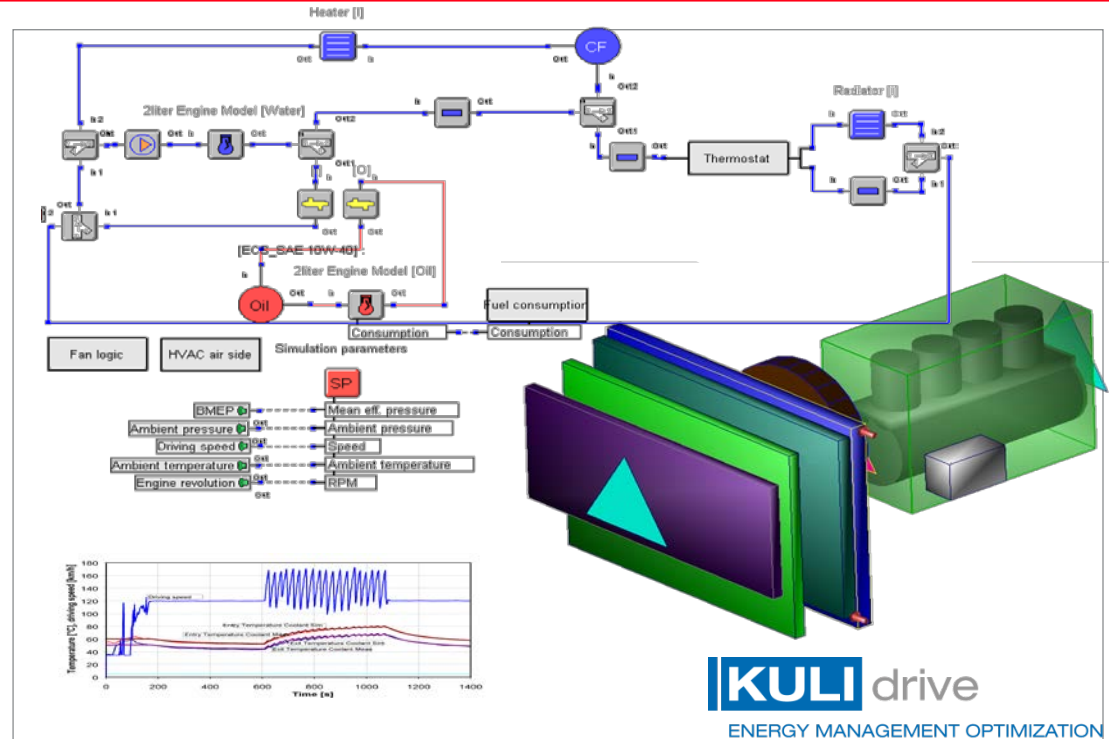
Description

Add-on module to KULI base or KULI hvac

- Only transient simulation of reference driving cycles allows using the full potential of CAE regarding component sizing & packaging and implementation of warm-up and cool-down strategies.

Features/Specifications

- No over sizing of components due to steady state operating points
- Reduced fuel consumption due to faster engine warm-up
- Improved passenger comfort due to faster cabin warm-up (or cool-down)
- More realistic temperature profiles due to consideration of thermal capacities (e.g. engine model, thermal network)
- Possibility for fast concept studies regarding comfort and fuel economy
- Optimization of control strategies
- Consideration of auxiliaries and drivetrain cooling



Innovation Pillars



SMARTER



SAFER



LIGHTER

Contact

- Name: Rolf Salomon
- Title: Manager KULI Sales
- Phone: +43 7435 501 2382
- Email: rolf.salomon@magna.com